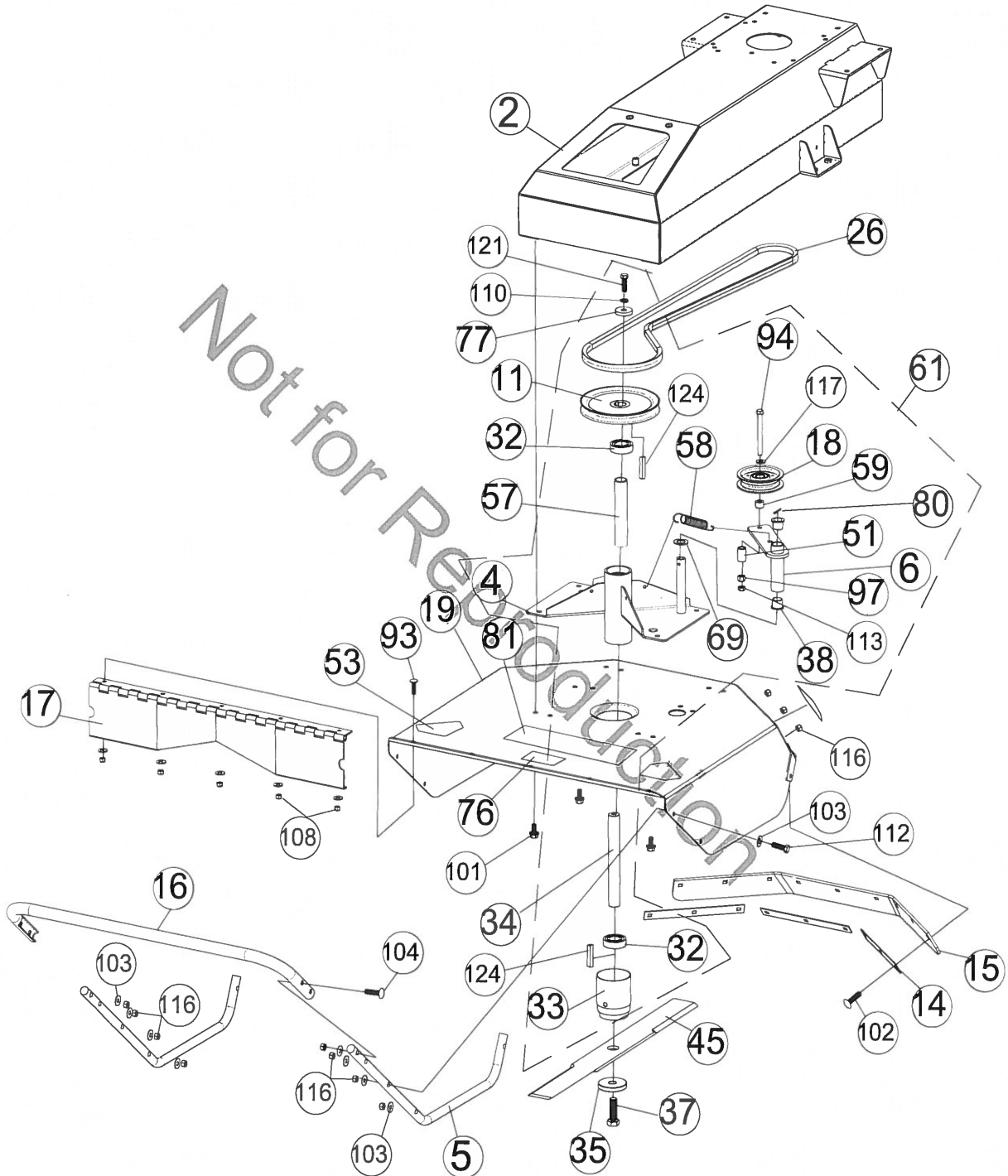


**ILLUSTRATED PARTS LIST**

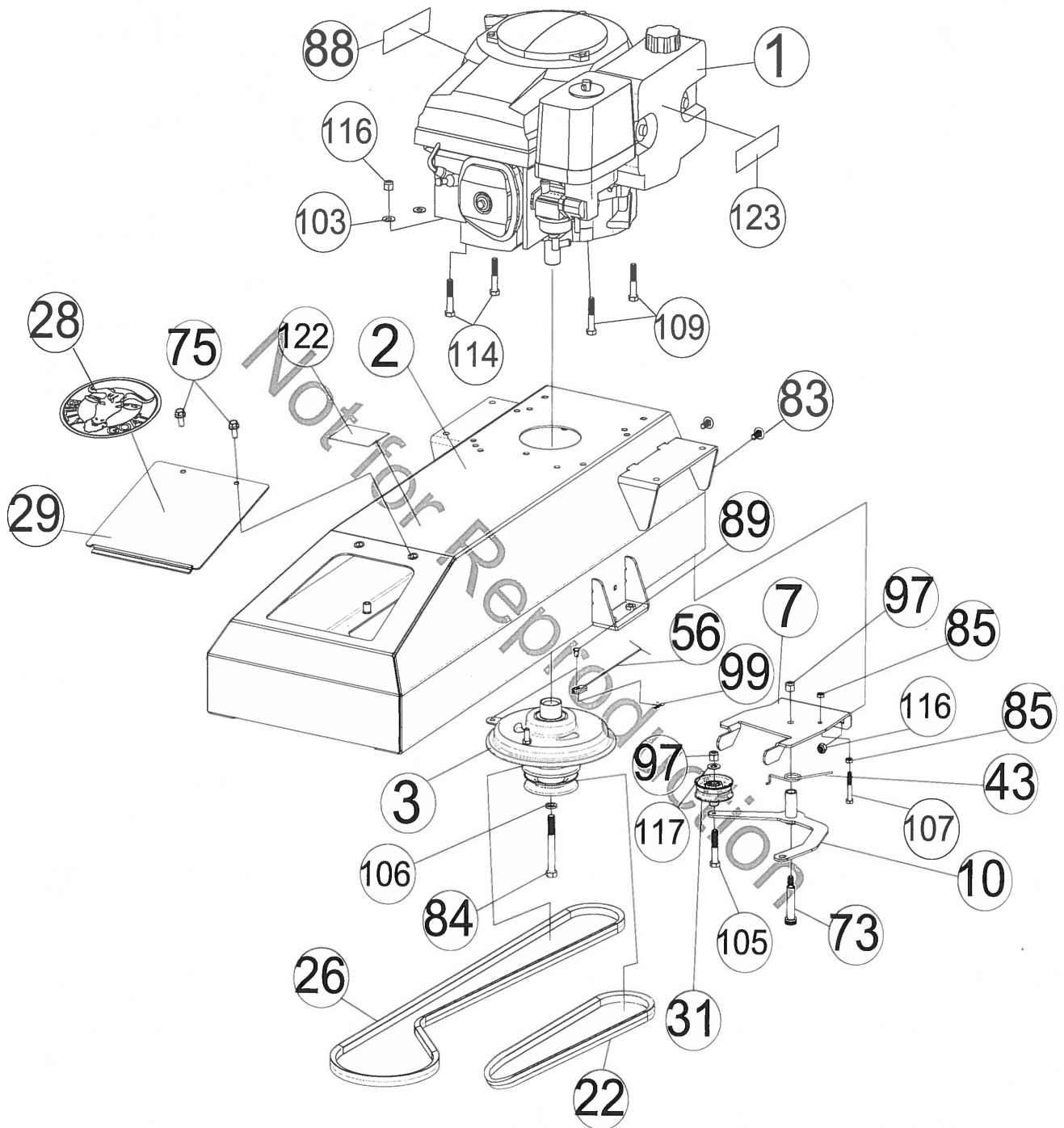


Deck Assembly



## BC2600 Mech Series Brush Cutter Owner's Manual

Item no.	Description	BC2600ICM		BC2600HM		BC2600HMF	
		Part no.	Qty	Part no.	Qty	Part no.	Qty
2	BASE ENGINE BC26 FIXED WA W/LABELS	501120-S	1	501120-S	1	501120-S	1
4	BRACKET DECK MOUNT WA BC	501118	1	501118	1	501118	1
5	SKID BC26	501407	2	501407	2	501407	2
6	ARM IDLER DECK WA BC	501103	1	501103	1	501103	1
11	PULLEY 7" OD X 1.00" BORE	501308	1	501308	1	501308	1
14	PLATE CLAMP SKIRTING BC26	501239	3	501239	3	501239	3
15	DEFLECTOR RUBBER BC26	501231	1	501231	1	501231	1
16	BAR GUARD BC26	501403	1	501403	1	501403	1
17	HINGE DEFLECTOR BC26	501211	1	501211	1	501211	1
18	PULLEY IDLER 4.00" OD X 3/8" BORE	500113	1	500113	1	500113	1
19	DECK WA BC26	501102	1	501102	1	501102	1
26	BELT 6972 POWERATED	501220	1	501220	1	501220	1
32	BEARING 1.00" SEALED PRESS IN	501302	2	501302	2	501302	2
33	ADAPTER BLADE WA BC26	501343	1	501343	1	501343	1
34	SHAFT BLADE BC2600	501341	1	501341	1	501341	1
35	WASHER BLADE BC26	501346	1	501346	1	501346	1
37	SCREWCAP 9/16"-18 X 1 3/4" GR 8	501345	1	501345	1	501345	1
38	BUSHING PIVOT LIFT	360138	2	360138	2	360138	2
45	BLADE 26" FLAT BC26	501224	1	501224	1	501224	1
51	BUSHING PIVOT FRAME AE	360183	2	360183	2	360183	2
53	LABEL DANGER	900327	4	900327	4	900327	4
57	SPACER SPINDLE BEARING BC2600	501245	1	501245	1	501245	1
58	SPRING IDLER	501261	1	501261	1	501261	1
59	TUBE PIVOT IDLER VQ	830526	1	830526	1	830526	1
61	SPINDLE ASSY BC26 FIXED	501608	1	501608	1	501608	1
69	WASHER .765" ID X 1.25" OD X .06"	850238	2	850238	2	850238	2
76	LABEL DANGER FLYING DEBRIS	810736	1	810736	1	810736	1
77	WASHER 1.5 OD X .453 ID X .25 THK	440153	1	440153	1	440153	1
80	PIN COTTER 1/8" X 1"	8197031	1	8197031	1	8197031	1
81	LABEL OUTBACK BC26 MECH	501501	1	501501	1	501501	1
93	BOLT CARRIAGE 1/4"-20 X 3/4" ZP	8024021	7	8024021	7	8024021	7
94	SCREWCAP 3/8"- 16 X 3 3/4" HCS ZP	8041061	1	8041061	1	8041061	1
97	NUT LOCK 3/8"-16 HEX	8160003	11	8160003	11	8160003	11
101	SER HEX WSHR FLNG SCR .375" - 16 X .75"	791080	6	791080	6	791080	6
102	BOLT CARRIAGE 5/16"-18 X 1" ZP	8024040	9	8024040	9	8024040	9
103	WASHER 5/16" FLAT ZP	8171003	18	8171003	18	8171003	18
104	BOLT CARRIAGE 5/16"- 18 X 1 1/4" ZP	8024041	4	8024041	4	8024041	4
108	NUT LOCK 1/4"-20 HEX ZP	8160001	7	8160001	7	8160001	7
110	WASHER LOCK 3/8" S/T MED	8177012	1	8177012	1	8177012	1
112	SCREWCAP 5/16"-18 X 1 1/2" HCS ZP	8041030	6	8041030	6	8041030	6
113	NUT LOCK 3/8"- 16 LT WT TH ZP	8161042	2	8161042	2	8161042	2
116	NUT LOCK 5/16"-18 HEX ZP	8160002	24	8160002	26	8160002	26
117	WASHER 3/8" SAE	8172009	2	8172009	2	8172009	2
121	SCREWCAP 3/8"-16 1 1/4" HCS ZP	8041051	1	8041051	1	8041051	1
124	KEY 1/4" SQ X 3/4"	9201109	2	9201109	2	9201109	2

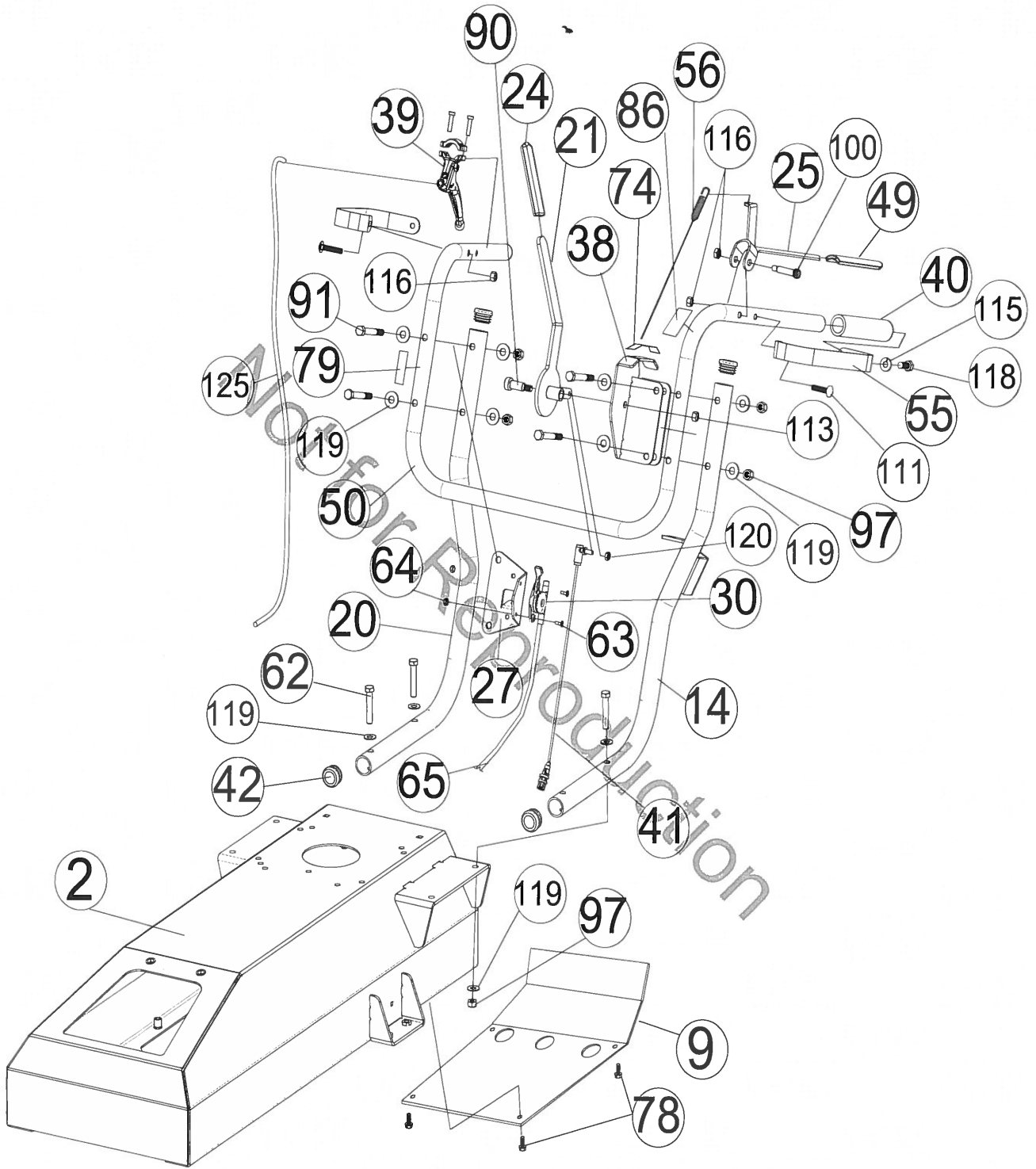


Engine Assembly



## BC2600 Mech Series Brush Cutter Owner's Manual

Item no.	Description	BC2600ICM		BC2600HM		BC2600HMF	
		Part no.	Qty	Part no.	Qty	Part no.	Qty
1	ENGINE 12.5 HP BRIGGS OHV VERT	520046	1	-	-	-	-
	ENGINE 13HP HONDA GX390UTQA2	-	-	500334	1	500334	1
2	BASE ENGINE BC26 FIXED WA W/LABELS	501120-S	1	501120-S	1	501120-S	1
3	CLUTCH	501223	1	501223	1	501223	1
7	BRACKET BELT TIGHTEN BC26	501249	1	501249	1	501249	1
10	ARM IDLER DRIVE MECH WA	501117	1	501117	1	501117	1
22	BELT 6830 POWERATED	501268	1	501268	1	501268	1
26	BELT 6972 POWERATED	501220	1	501220	1	501220	1
28	LABEL PRODUCT DECAL LG CIRCLE	430303	1	430303	1	430303	1
29	DOOR BASE ENGINE BC	500233	1	500233	1	500233	1
31	PULLEY IDLER ARM HP	521121	1	521121	1	521121	1
43	SPRING TRANS IDLER	510142	1	510142	1	510142	1
56	CABLE CLUTCH BC26	501279	1	501279	1	501279	1
73	BOLT SHOULDER 1/2" X 2"	520031	1	520031	1	520031	1
75	SER HEX WSHR FLNG SCR 5/16"-18 X 3/4"	351264	4	351264	4	351264	4
83	BOLT CARRIAGE 5/16"-18 X 3/4" ZP	8024039	2	8024039	2	8024039	2
84	SCREWCAP 7/16" -20 X 3 1/2" GR. 8 W/PATCH	440150	1	440150	1	440150	1
85	NUT JAM 1/4" NC HEX	8143001	2	8143001	2	8143001	2
88	LABEL WARNING FUEL EN/SP	100261	1	-	-	-	-
89	PIN CLEVIS .25 X .050	440124	1	440124	1	440124	1
97	NUT LOCK 3/8"-16 HEX	8160003	11	8160003	11	8160003	11
99	PIN HITCH CLIP .051 X 3/4"	440193	1	440193	1	440193	1
103	WASHER 5/16" FLAT ZP	8171003	18	8171003	18	8171003	18
105	SCREWCAP 3/8"-16 X 2" HCS ZP	8041054	1	8041054	1	8041054	1
106	WASHER LOCK 7/16" S/T MED	8177013	1	8177013	1	8177013	1
107	SCREWCAP 1/4"-20 X 1 3/4" HCS ZP	8041009	1	8041009	1	8041009	1
109	SCREW 3/8" X 1 1/2" TCS	850408	5	850408	1	850408	1
	SCREWCAP 5/16"- 24 X 1" GR. 8 ZP W/PATCH	-	-	400164	2	400164	2
114	SCREWCAP 5/16"- 18 X 1 3/4" GR. 5 HCS ZP	-	-	8041031	2	8041031	2
116	NUT LOCK 5/16"-18 HEX ZP	8160002	24	8160002	26	8160002	26
117	WASHER 3/8" SAE	8172009	2	8172009	2	8172009	2
122	LABEL GUARDS	900327	1	900327	1	900327	1
123	LABEL SPARK ARRESTOR	100256	1	100256	1	100256	1



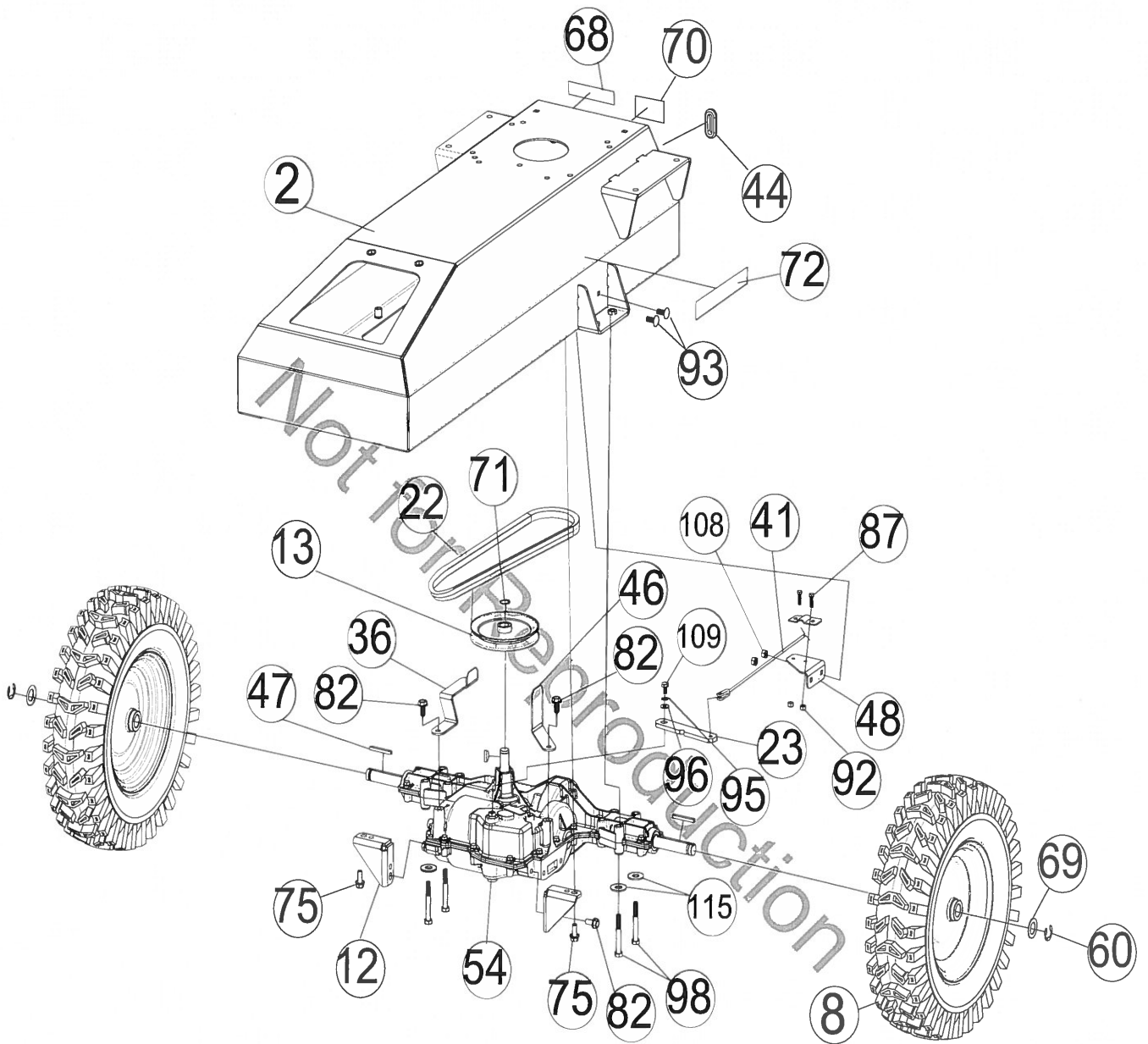
Handle Assembly





## BC2600 Series Brush Cutter Owner's Manual

Item no.	Description	BC2600ICM		BC2600HM		BC2600HMF	
		Part no.	Qty	Part no.	Qty	Part no.	Qty
2	BASE ENGINE BC26 FIXED WA W/LABELS	501120-S	1	501120-S	1	501120-S	1
9	GUARD REAR BC26	501298	1	501298	1	501298	1
14	TRANS CABLE BRACKET WA	501115	1	501115	1	501115	1
20	HANDLE LOWER RIGHT	501401	1	501401	1	501401	1
21	LEVER SHIFTER WA BC26	501107	1	501107	1	501107	1
24	GRIP LEVER 1" X 4.25"	840191	1	840191	1	840191	1
25	LEVER CONTROL BLADE LIGHT	500312	1	500312	1	500312	1
27	BRACKET THROTTLE BC26	501251	1	501251	1	501251	1
30	CONTROL THROTTLE	440013	1	440013	1	440013	1
38	BRACKET SHIFTER WA W/LABELS	501108-S	1	501108-S	2	501108-S	2
39	CONTROL MAGURA OS900SP	351209	1	351209	1	351209	1
40	GRIP HANDLE 1" X 5.5"	500267	2	500267	2	500267	2
41	CABLE CONTROL SHIFTER BC26	501254	1	501254	1	501254	1
42	PLUG TUBE INSERT 1.25 OD	791056	4	791056	4	791056	4
49	GRIP LEVER 0.125" X 1" X 5" ORANGE	500379	1	500379	1	500379	1
50	HANDLE UPPER	501402	1	501402	1	501402	1
55	GUARD HAND BC26	501215	2	501215	2	501215	2
56	CABLE CLUTCH BC26	501279	1	501279	1	501279	1
62	SCREWCAP 3/8"- 16 X 2"	8041054	4	8041054	4	8041054	4
63	SCREW MACH #10 - 24 FLAT HD	830514	2	830514	2	830514	2
64	NUT LOCK LT #10 - 24 HEX	8164005	2	8164005	2	8164005	2
65	CABLE THROTTLE 31.5"	440178	1	-	-	-	-
	CABLE THROTTLE CONTROL 25.5	-	-	440014	1	440014	1
74	LABEL SHIFT BC26 MECH	501503	1	501503	1	501503	1
78	SCREW SELT TAP 1/4"-20 X 5/8 HWH TYPE F	890359	4	890359	4	890359	4
79	LABEL THROTTLE	501314	1	501314	1	501314	1
86	LABEL CLUTCH BLADE	500177	1	500177	1	500177	1
90	BOLT SHOULDER 1/2" X 1"	500114	1	500114	1	500114	1
91	SCREWCAP 3/8"-16 X 3" HCS ZP	8041058	8	8041058	8	8041058	8
97	NUT LOCK 3/8"-16 HEX	8160003	11	8160003	11	8160003	11
100	BOLT SHOULDER 3/8"- 16 X 1 1/2"	501313	1	501313	1	501313	1
111	BOLT CARRIAGE 5/16"- 18 X 1 1/2" ZP	8024042	2	8024042	2	8024042	2
113	NUT LOCK 3/8"- 16 LT WT TH ZP	8161042	2	8161042	2	8161042	2
115	WASHER LOCK 5/16" S/T MED	8177011	6	8177011	6	8177011	6
116	NUT LOCK 5/16"-18 HEX ZP	8160002	24	8160002	26	8160002	26
118	SCREWCAP 5/16"- 18 X 1"	8041028	2	8041028	2	8041028	2
119	WASHER 3/8" FC	8171004	16	8171004	16	8171004	16
120	NUT LOCK 1/4"- 28 TH ZP	8161020	1	8161020	1	8161020	1
125	CABLE DRIVE BC26	501282	1	501282	1	501282	1



Transaxle Drawing



## BC2600 Series Brush Cutter Owner's Manual

Item no.	Description	BC2600ICM		BC2600HM		BC2600HMF	
		Part no.	Qty	Part no.	Qty	Part no.	Qty
2	BASE ENGINE BC26 FIXED WA	501120-S	1	501120-S	1	501120-S	1
8	WHEEL 16" STUD TREAD W/CENTERED HUB	500366	2	500366	2	-	-
	WHEEL 16" STUD TREAD FOAM FILLED	-	-	-	-	500371	2
12	BRACKET ANTI ROTATION	501338	2	501338	2	501338	2
13	PULLEY 5" OD "A" SEC	501248	1	501248	1	501248	1
22	BELT 6830 POWERATED	501268	1	501268	1	501268	1
23	BAR SHIFT T AXLE	501255	1	501255	1	501255	1
36	BRACKET BELT FINGER BC26	501252	1	501252	1	501252	1
41	CABLE CONTROL SHIFTER BC26	501254	1	501254	1	501254	1
44	GROMMET 1.25" HOLE	520092	1	520092	1	520092	1
46	GUIDE BELT RH BC	501253	1	501253	1	501253	1
47	KEY 3/16" SQ X 2 1/8"	9201087	2	9201087	2	9201087	2
48	BRACKET SHIFTER LOWER BC26	501283	1	501283	1	501283	1
54	TRANSAXLE 3 SPD W/REV	521102	1	521102	1	521102	1
60	RING RETAINING "E" 3/4"	850230	2	850230	2	850230	2
68	LABEL SAFETY PROTECT READ MANUAL	100346	1	100346	1	100346	1
69	WASHER .765" ID X 1.25" OD X .06"	850238	2	850238	2	850238	2
70	LABEL MADE IN USA	520116	1	520116	1	520116	1
71	RING SNAP TRUARC 5/8"	850233	1	850233	1	850233	1
72	LABEL CHOCK WHEEL	500168	2	500168	2	500168	2
75	SER HEX WSHR FLNG SCR 5/16"-18 X 3/4"	351264	4	351264	4	351264	4
82	SCREW SELF TAP 5/16" X 3/4" HEX	8123128	4	8123128	4	8123128	4
87	SCREW MACHINE #10-24 X 3/4" WF ZP	8059136	2	8059136	2	8059136	2
92	NUT LOCK #10-24 HEX	8155007	2	8155007	2	8155007	2
93	BOLT CARRIAGE 1/4"-20 X 3/4" ZP	8024021	7	8024021	7	8024021	7
95	WASHER LOCK 1/4" EXTERNAL TOOTH	8181007	1	8181007	1	8181007	1
96	WASHER 1/4" SAE	8172007	1	8172007	1	8172007	1
98	SCREWCAP 5/16"-18 X 2 3/4" HCS ZP	8041035	4	8041035	4	8041035	4
108	NUT LOCK 1/4"-20 HEX ZP	8160001	7	8160001	7	8160001	7
109	SCREW 3/8" X 1 1/2" TCS	850408	5	850408	1	850408	1
	SCREWCAP 5/16"- 24 X 1" GR. 8 ZP W/PATCH	-	-	400164	2	400164	2
115	WASHER LOCK 5/16" S/T MED	8177011	6	8177011	6	8177011	6