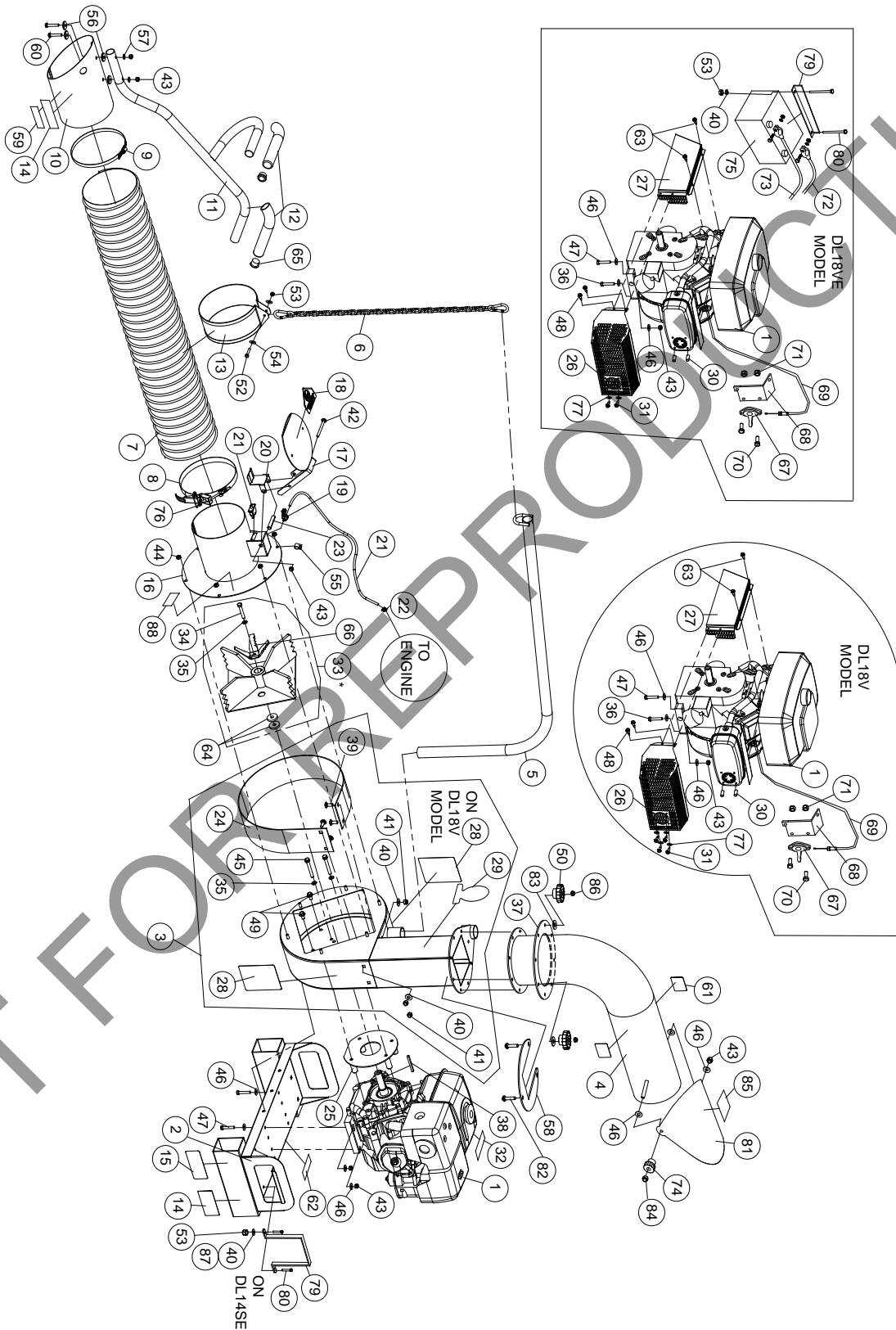




DLEU 9-18 PARTS DRAWING





DLEU9-18 Owner's Manual

DLEU 9-18 PARTS LIST

| ITEM NO. | DESCRIPTION | DL901HEU PART NO. | QTY | DL1301HEU PART NO. | QTY | DL1401SEEU PART NO. | QTY | DL1801VEU PART NO. | QTY | DL1801VEEU PART NO. | QTY |
|----------|---------------------------------------|-------------------|-----|--------------------|-----|---------------------|-----|--------------------|-----|---------------------|-----|
| | ENGINE HONDA 9HP | 430287 | 1 | - | - | - | - | - | - | - | - |
| | ENGINE HONDA 13HP | - | - | 430366 | 1 | - | - | - | - | - | - |
| | ENGINE VANGUARD ELECTRIC | - | - | - | - | - | - | - | - | 812241 | 1 |
| | ENGINE VANGUARD ELECTRIC | - | - | - | - | - | - | 812240 | 1 | - | - |
| | ENGINE SUBARU ELECTRIC | - | - | - | - | 812369 | 1 | - | - | - | - |
| 2 | BASE ENGINE WA | 812100-S | 1 | 812100-S | 1 | 812100-S | 1 | 812100-S | 1 | 812100-S | 1 |
| 3 | HOUSING WA DL12/13 W/LABELS | 812216-S | 1 | 812216-S | 1 | - | - | - | - | - | - |
| | HOUSING WA DL18 W/LABELS | - | - | - | - | 812101-S | 1 | 812101-S | 1 | 812101-S | 1 |
| 4 | ELBOW ASSY 7" DL | 811191-S | 1 | 811191-S | 1 | 811191-S | 1 | 811191-S | 1 | 811191-S | 1 |
| 5 | BOOM WA DL | 812245 | 1 | 812245 | 1 | 812245 | 1 | 812245 | 1 | 812245 | 1 |
| 6 | CHAIN HOSE HANG DL | 791117 | 1 | 791117 | 1 | 791117 | 1 | 791117 | 1 | 791117 | 1 |
| 7 | HOSE 8"X10" | - | - | 811244 | 1 | - | - | - | - | - | - |
| | HOSE 8" X 16.5' | 812390 | - | - | - | - | - | - | - | - | - |
| | HOSE 10" X 10" | - | - | - | - | 791033 | 1 | 791033 | 1 | 791033 | 1 |
| 8 | CLAMP QUICK RELEASE 8" | 812254 | 1 | 812254 | 1 | - | - | - | - | - | - |
| | CLAMP QUICK RELEASE 10" | - | - | - | - | 791064 | 1 | 791064 | 1 | 791064 | 1 |
| 9 | CLAMP HOSE 8" | 810566 | 1 | 810566 | 1 | - | - | - | - | - | - |
| | CLAMP HOSE 10" | - | - | - | - | 810706-01 | 1 | 810706-01 | 1 | 810706-01 | 1 |
| 10 | NOZZLE 8" STEEL FORMED W/LABELS | 811007-S | 1 | 811007-S | 1 | - | - | - | - | - | - |
| | NOZZLE 10" STEEL FORMED W/LABELS | - | - | - | - | 811005-S | 1 | 811005-S | 1 | 811005-S | 1 |
| 11 | HANDLE NOZZLE WA DEBRIS LOADER | 791116 | 1 | 791116 | 1 | 791116 | 1 | 791116 | 1 | 791116 | 1 |
| 12 | GRIP 1 1/4 I.D. X 9.5 LONG | 440146 | 2 | 440146 | 2 | 440146 | 2 | 440146 | 2 | 440146 | 2 |
| 13 | BAND HOSE BOOM 8" FORMED | 810880 | 1 | 810880 | 1 | - | - | - | - | - | - |
| | BAND HOSE BOOM 10" FORMED | - | - | - | - | 810868 | 1 | 810868 | 1 | 810868 | 1 |
| 14 | LABEL WARNING ENGINE OVERHEAT | 811215 | 2 | 811215 | 2 | 811215 | 2 | 811215 | 2 | 811215 | 2 |
| 15 | LABEL SPARK ARRESTOR | 100252 | 1 | 100252 | 1 | 100252 | 1 | 100252 | 1 | 100252 | 1 |
| 16 | PLATE FRONT WA DL 8" | 812104-S | 1 | 812104-S | 1 | - | - | - | - | - | - |
| | PLATE FRONT WA DL 10" | - | - | - | - | 812103-S | 1 | 812103-S | 1 | 812103-S | 1 |
| 17 | FLAPPER WA 8" W/LABELS | 812230-S | 1 | 812230-S | 1 | - | - | - | - | - | - |
| | FLAPPER WA 10" W/LABELS | - | - | - | - | 791102-S | 1 | 791102-S | 1 | 791102-S | 1 |
| 18 | LABEL WARNING OPEI | 400424 | 1 | 400424 | 1 | 400424 | 1 | 400424 | 1 | 400424 | 1 |
| 19 | STRAIN RELIEF HEYCO 1244 | 500282 | 1 | 500282 | 1 | 500282 | 1 | 500282 | 1 | 500282 | 1 |
| 20 | LEVER HOSE SWITCH | 791068 | 1 | 791068 | 1 | 791068 | 1 | 791068 | 1 | 791068 | 1 |
| 21 | SWITCH AND HARNESS DL ASSY | 791130 | 1 | 791130 | 1 | 791130 | 1 | 791130 | 1 | 791130 | 1 |
| 22 | CONNECTOR TAP IN SQUEEZE | 810673 | 1 | 810673 | 1 | 810673 | 1 | - | - | - | - |
| 23 | SPACER 3/8" X 2 1/2" | 900503 | 1 | 900503 | 1 | 900503 | 1 | 900503 | 1 | 900503 | 1 |
| 24 | LINER PLASTIC DL13 | 812394 | 1 | 812394 | 1 | - | - | - | - | - | - |
| | LINER SMALL HOUSING DL18 (PLASTIC) | - | - | - | - | 812391 | 1 | 812391 | 1 | 812391 | 1 |
| 25 | PLATE ENGINE MOUNT DL12/13 | 812235 | 1 | 812235 | 1 | - | - | - | - | - | - |
| | PLATE ENGINE MOUNT DL18 | - | - | - | - | 812320 | 1 | 812238 | 1 | 812238 | 1 |
| 26 | GUARD MUFFLER DL18 | - | - | - | - | - | - | 812410 | 1 | 812410 | 1 |
| 27 | GUARD MANIFOLD DL18 SW | - | - | - | - | - | - | 812243 | 1 | 812243 | 1 |
| 28 | LABEL DL INSTRUCTION/WARNING | 790142 | 1 | 790142 | 1 | 790142 | 1 | 790142 | 1 | 790142 | 1 |
| 29 | LABEL LOGO DL12/13/18 | 812213 | 1 | 812213 | 1 | 812213 | 1 | 812213 | 1 | 812213 | 1 |
| 30 | SPACER CONTROL LIFT | - | - | - | - | - | - | 850198 | 4 | 850198 | 4 |
| 31 | SCREW SN #10 X 1" TYPE A SLOT HWH | - | - | - | - | - | - | 8122066 | 4 | 8122066 | 4 |
| 32 | LABEL WARNING FUEL EV/SP | - | - | - | - | - | - | 100261 | 1 | 100261 | 1 |
| 33* | IMPELLER ASSY (ITEM 66 NOT INCLUDED) | 812257-S | 1 | 812257-S | 1 | - | - | - | - | - | - |
| | IMPELLER ASSY (ITEM 66 NOT INCLUDED) | - | - | - | - | 810930 | 1 | 810930 | 1 | 810930 | 1 |
| 34 | SCREWCAP 3/8-24 X 2 3/4 GR 8. W/PATCH | 790167 | 1 | 790167 | 1 | - | - | - | - | - | - |
| | SCREWCAP 3/8-24 X 2 1/4 GR 8. | - | - | - | - | - | - | 810932 | 1 | 810932 | 1 |
| | SCREWCAP 3/8"-24"X3" GR 8 W/PATCH | - | - | - | - | 440237 | 1 | - | - | - | - |
| | TORQUE 33-38 FT LBS. (45-52 N.m) | - | - | - | - | - | - | - | - | - | - |
| 35 | WASHER LOCK 3/8" | 8177012 | 5 | 8177012 | 5 | 8177012 | 5 | 8177012 | 5 | 8177012 | 5 |



DLEU9-18 Owner's Manual

| ITEM NO. | DESCRIPTION | DL901HEU PART NO. | QTY | DL1301HEU PART NO. | QTY | DL1401SEEU PART NO. | QTY | DL1801VEU PART NO. | QTY | DL1801VEEU PART NO. | QTY |
|----------|--|-------------------|-----|--------------------|-----|---------------------|-----|--------------------|-----|---------------------|-----|
| 36 | SCREWCAP 5/16-18 X 2" HCS ZP | - | - | - | - | - | - | 8041032 | 2 | 8041032 | 2 |
| 37 | FLANGE UPPER EXHAUST ROTATE | 812331 | 1 | 812331 | 1 | 812331 | 1 | 812331 | 1 | 812331 | 1 |
| 38 | KEY 1/4 SQ X 2 3/4" | 9201125 | 1 | 9201125 | 1 | - | - | 9201125 | 1 | 9201125 | 1 |
| | KEY 1/4 SQ X 3 1/4" | - | - | - | - | 9201128 | 1 | - | - | - | - |
| 39 | BOLT CARRIAGE 3/8 -16 X 1" ZP | 8024058 | 4 | 8024058 | 4 | 8024058 | 4 | 8024058 | 4 | 8024058 | 4 |
| 40 | WASHER 3/8 FLAT CUT | 8171004 | 4 | 8171004 | 4 | 8171004 | 6 | 8171004 | 4 | 8171004 | 4 |
| 41 | NUT LOCK 3/8-16 HEX ZP | 8160003 | 4 | 8160003 | 4 | 8160003 | 4 | 8160003 | 4 | 8160003 | 4 |
| 42 | BOLT CARRIAGE 5/16" - 18 X 3 1/2" ZP | 8024050 | 1 | 8024050 | 1 | 8024050 | 1 | 8024050 | 1 | 8024050 | 1 |
| 43 | NUT LOCK 5/16-18 HEX ZP | 8160002 | 8 | 8160002 | 8 | 8160002 | 8 | 8160002 | 8 | 8160002 | 8 |
| 44 | NUT FLANGE 5/16-18 HEX ZP | 350346 | 6 | 350346 | 6 | 350346 | 6 | 350346 | 10 | 350346 | 10 |
| 45 | SCREWCAP 3/8-16 X 3" HCS ZP | 8041058 | 4 | 8041058 | 4 | 8041058 | 4 | - | - | - | - |
| | SCREWCAP 3/8-16 X 1 3/4" HCS ZP | - | - | - | - | - | - | 8041053 | 4 | 8041053 | 4 |
| 46 | WASHER 5/16 FLAT ZP | 8171003 | 11 | 8171003 | 11 | 8171003 | 11 | 8171003 | 11 | 8171003 | 11 |
| 47 | SCREWCAP 5/16-18 X 1 3/4" HCS ZP | 8041031 | 4 | 8041031 | 4 | 8041031 | 4 | 8041031 | 2 | 8041031 | 2 |
| 48 | SCREW SM 1/4 X 3/4" TYPE AB HX WF | - | - | - | - | - | - | 890359 | 2 | 890359 | 2 |
| 49 | HEX WASHER FACE BOLT 3/8-16 X 3/4 | 791080 | 3 | 791080 | 3 | 791080 | 3 | 791080 | 3 | 791080 | 3 |
| 50 | KNOB 3/8"-16 | 811230 | 3 | 811230 | 3 | 811230 | 3 | 811230 | 3 | 811230 | 3 |
| 51 | WASHER 3/8 SAE | 8172009 | 8 | 8172009 | 8 | 8172009 | 8 | 8172009 | 8 | 8172009 | 8 |
| 52 | SCREWCAP 1/4"-20 X 2 3/4" HCS ZP | 8041013 | 1 | 8041013 | 1 | 8041013 | 1 | 8041013 | 1 | 8041013 | 1 |
| 53 | NUT LOCK 1/4-20 HEX ZP | 8160001 | 1 | 8160001 | 1 | 8160001 | 3 | 8160001 | 3 | 8160001 | 3 |
| 54 | WASHER 1/4-20 HEX ZP | 8172007 | 2 | 8172007 | 2 | 8172007 | 2 | 8172007 | 2 | 8172007 | 2 |
| 55 | CLAMP HOSE FUEL LINE | 791070 | 2 | 791070 | 2 | 791070 | 2 | 791070 | 2 | 791070 | 2 |
| 56 | WASHER FENDER 5/16 | 8172020 | 4 | 8172020 | 4 | 8172020 | 4 | 8172020 | 4 | 8172020 | 4 |
| 57 | WASHER 5/16 SAE | 8172008 | 2 | 8172008 | 2 | 8172008 | 2 | 8172008 | 2 | 8172008 | 2 |
| 58 | FLANGE LOWER EXHAUST ROTATE | 812330 | 1 | 812330 | 1 | 812330 | 1 | 812330 | 1 | 812330 | 1 |
| 59 | LABEL SECURE NOZZLE | 790301 | 1 | 790301 | 1 | 790301 | 1 | 790301 | 1 | 790301 | 1 |
| 60 | SCREWCAP 5/16" - 18 X 2" | 8041032 | 2 | 8041032 | 2 | 8041032 | 2 | 8041032 | 2 | 8041032 | 2 |
| 61 | LABEL FLYING DEBRIS | 810736 | 2 | 810736 | 2 | 810736 | 2 | 810736 | 2 | 810736 | 2 |
| 62 | WARNING SECURE | 790232 | 1 | 790232 | 1 | 790232 | 1 | 790232 | 1 | 790232 | 1 |
| 63 | BOLT 1/4"-20 X 1/2" SER FLANGE | - | - | - | - | - | - | 812381 | 2 | 812381 | 2 |
| 64 | SPACER 1" ID X 2" OD X 0.265 THK | 830113 | 2 | 830113 | 2 | - | - | - | - | - | - |
| | SPACER 1" ID X 2" OD X .890 THK | - | - | - | - | 830112 | 1 | - | - | - | - |
| 65 | PLUG TUBE INSERT 1.25 OD | 791056 | 2 | 791056 | 2 | 791056 | 2 | 791056 | 2 | 791056 | 2 |
| 66 | DEBRIS REDUCER DL12/13/18 | 812283 | 1 | 812283 | 1 | 812283 | 1 | 812283 | 1 | 812283 | 1 |
| 67 | THROTTLE CONTROL BLOWER | - | - | - | - | - | - | 440013 | 1 | 440013 | 1 |
| 68 | BRACKET MOUNT THROTTLE CONTROL | - | - | - | - | - | - | 812280 | 1 | 812280 | 1 |
| 69 | CABLE THROTTLE DL18 | - | - | - | - | - | - | 812281 | 1 | 812281 | 1 |
| 70 | SCREW MACH FLAT HD PHIL #10-24 | - | - | - | - | - | - | 830514 | 2 | 830514 | 2 |
| 71 | NUT LOCK #10-24 HEX | - | - | - | - | - | - | 8164005 | 2 | 8164005 | 2 |
| 72 | CABLE BATTERY RED 36" | - | - | - | - | - | - | - | - | 812282 | 1 |
| 73 | CABLE BATTERY BLACK 20" | - | - | - | - | - | - | - | - | 812341 | 1 |
| 74 | KNOB | 400339 | 1 | 400339 | 1 | 400339 | 1 | - | - | 400339 | 1 |
| 75 | BATTERY 12 V (NOT SUPPLIED ON DL18, SEE PAGE 3 FOR BATTERY MODEL AND SPECIFICATIONS) | - | - | - | - | 812372 | 1 | - | - | REF | REF |
| 76 | PIN SAFETY | 800365 | 1 | 800365 | 1 | 800365 | 1 | 800365 | 1 | 800365 | 1 |
| 77 | WASHER LOCK 1/4" EXTERNAL TOOTH | - | - | - | - | - | - | 8181007 | 4 | 8181007 | 4 |
| 78 | TERMINAL PIGGY BACK 3/16" | - | - | - | - | - | - | - | - | 890010 | 1 |
| 79 | BRACKET BATTERY DL | - | - | - | - | 812372 | 1 | - | - | 790230 | 1 |
| 80 | SCREWCAP 1/4"-20 X 1 1/2" HCS ZP | - | - | - | - | - | - | - | - | 8041002 | 2 |
| | BOLT CARRIAGE 3/8-16 X 1" ZP | - | - | - | - | 8024058 | 2 | - | - | - | - |
| 81 | DEFLECTOR EXHAUST 7" | 811111 | 1 | 811111 | 1 | 811111 | 1 | - | - | - | - |
| 82 | BOLT CARRIAGE 3/8"-16 X 3" | 8024066 | 3 | 8024066 | 3 | 8024066 | 3 | 8024066 | 3 | 8024066 | 3 |
| 83 | WASHER 2.25" OD X .515" ID X .134 ZP | 610308-P | 3 | 610308-P | 3 | 610308-P | 3 | 610308-P | 3 | 610308-P | 3 |
| 84 | NUT LOCK 5/16"-18 THIN HT | 8161041 | 1 | 8161041 | 1 | 8161041 | 1 | 8161041 | 1 | 8161041 | 1 |
| 85 | LABEL DANGER | 400424 | 2 | 400424 | 2 | 400424 | 2 | 400424 | 2 | 400424 | 2 |
| 86 | NUT LOCK 3/8"-16 LT WT TH ZP | 8161042 | 3 | 8161042 | 3 | 8161042 | 3 | 8161042 | 3 | 8161042 | 3 |
| 87 | WASHER 1/4" ZP | - | - | - | - | 8171002 | 2 | - | - | - | - |
| 88 | LABEL WARNING LINER DL | 100330 | 1 | 100330 | 1 | 100330 | 1 | 100330 | 1 | 100330 | 1 |