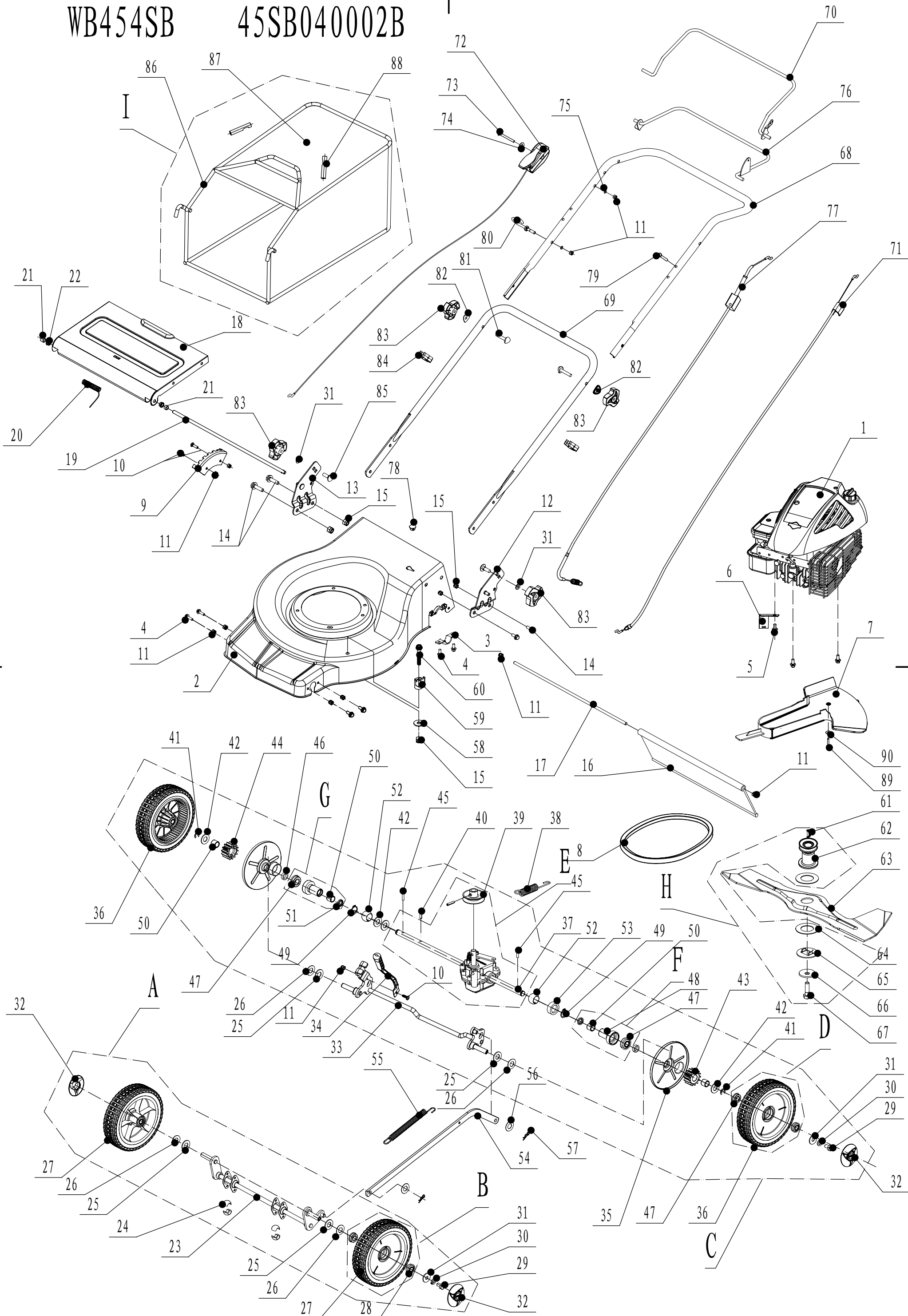


WB454SB

45SB040002B



WB454SB Ersatzteilliste

Order	Teil Nummer	Bez.: Deutsch	Bez.: Englisch
1	10T502	Motor	engine
2	4520101010	Gehäuse	mower chassis assembly
3	5320114020	Klammer	upper bearing bracket
4	102006012	Bolzen	hex flange bolt
5	5320115010	Mutter	triangle lock nut
6	5020112010	Halter	defense cover bracket
7	4520109010	Schild	trip shield
8	4520111010	Keilriemen	V type belt
9	4510107010	Höheneinstellraste	height adjustment graduator
10	104006014	Bolzen	cross slot bolt
11	202006000	Mutter	lock nut
12	4510108020	Halter links	left bracket
13	4510109020	Halter rechts	right bracket
14	102010016	Bolzen	flange bolt
15	202010000	Mutter	lock nut
16	4510111010	Schutz hinten	sweeper
17	4510112010	Stange	defense board axis
18	4510113020	Abdeckung hinten	rear cover
19	4510114020	Stange	rear cover pivot
20	4510115010	Feder	reed
21	4510119010	Ring	rear cover partition
22	5320127021	Nylon Buchse	rear cover nylon cover
23	4520201010	Stift	front axle welding
24	5310209010	Kugellager	ball bearing
25	5310210010	Scheibe	wheel axis spacer
26	5310211010	Feder	equalizing spring
27	4520204010	Rad	wheel
28	4510214010	Lager	bearing
29	101008015	Bolzen	bolt
30	401008000	Scheibe	spring washer
31	301008000	Scheibe	flat washer
32	4520205010	Radschild	wheel hub cover
33	4520301010	Hinterachse	rear axle welding
34	4510303010	Höheneinstellhebel	height adjustment handle
35	4520308010	Radabdeckung	dustproof cover
36	4820305010	Rad	hollow driving wheel assembly
37	4520310010	Getriebe	gearbox
38	4520312010	Feder	gearbox draw staff
39	5320319020	Getrieberiemenscheibe	gearbox trip wheel
40	701005020	federstift	spring pin
41	1301009000	Ring	spring block ring
42	5020311010	Reibscheibe	friction mat
43	5320320010	Zahnrad links	left output gear
44	5320321010	Zahnrad rechts	right output gear
45	5320322010	Stift	slide pin
46	4520316010	Buchse	axis sheath
47	5310213010	Lager	bearing
48	5320324020	Lagerhalter	left bearing cover
49	1001020000	sicherungsring	spring block ring
50	5320326010	Lager	bearing
51	5320327010	Staubabdeckung	dustproof ring

52	5320328010	Nylon Lager	nylon surface bearing
53	4520313010	Buchse	rear axle partition
54	4510310020	Haltearm	draw staff
55	4510311010	Bolzen	bolt
56	301010000	Scheibe	flat washer
57	5320333010	Federsplint	draw staff block reed
58	302010000	Scheibe	flat washer
59	5310317010	Halterung	reed pedestal
60	102010045	Bolzen	bolt
61	4510401010	Keil	key
62	4520402010	Messerhalter	trip wheel connecting axis
63	4510403010	Messer	blade
64	5310402010	Reibscheibe	friction washer
65	5310404010	Ring	fixation block board
66	5310406010	Feder	spring
67	5310415010	Mutter	hub nut
68	4520501010	Holm oben	upper handle
69	4510502020	Holm unten	lower handle
70	4520503010	Bremsgriff	brake handle
71	4520505010	Bremskabel	brake cable assembly
72	4510508040	Gaszug	accelerograph cable assembly
73	104006050	Bolzen	cross slot bolt
74	302006000	Scheibe	flat washer
75	301006000	Scheibe	flat washer
76	4520510010	Kupplungshebel	clutch handle
77	4520513010	Kupplungskabel	clutch cable assembly
78	4520514010	Buchse	clutch cable cover
79	104006030	Bolzen	cross slot bolt
80	4510511010	Startseilknopf	star roop hook
81	5310510010	Bolzen	connecting bolt
82	4510510010	Scheibe	arc washer
83	4820541010	Knopf	plastic twist grip
84	5320517010	Stift	cable pin
85	4510513010	Bolzen	square neck bolt
86	4510602030	Rahmen	grass catcher frame
87	4510603030	Fangsack	grass catcher
88	4510602050	Fangsackschutz	grass catcher cover
89	106004025	Bolzen	cross slot bolt
90	302005000	Scheibe	big flat washer

Anzahl
1
1
2
8
3
1
1
1
1
3
11
1
1
4
5
1
1
1
1
1
1
2
2
1
4
4
4
2
4
4
4
4
4
4
4
1
1
2
2
1
1
1
2
2
4
1
1
2
2
2
6
2
2
4
2

2
1
1
1
2
2
1
1
1
1
1
1
2
1
1
1
1
1
1
1
1
1
1
1
1
2
1
1
1
1
1
2
2
4
2
2
1
1
1
1
1