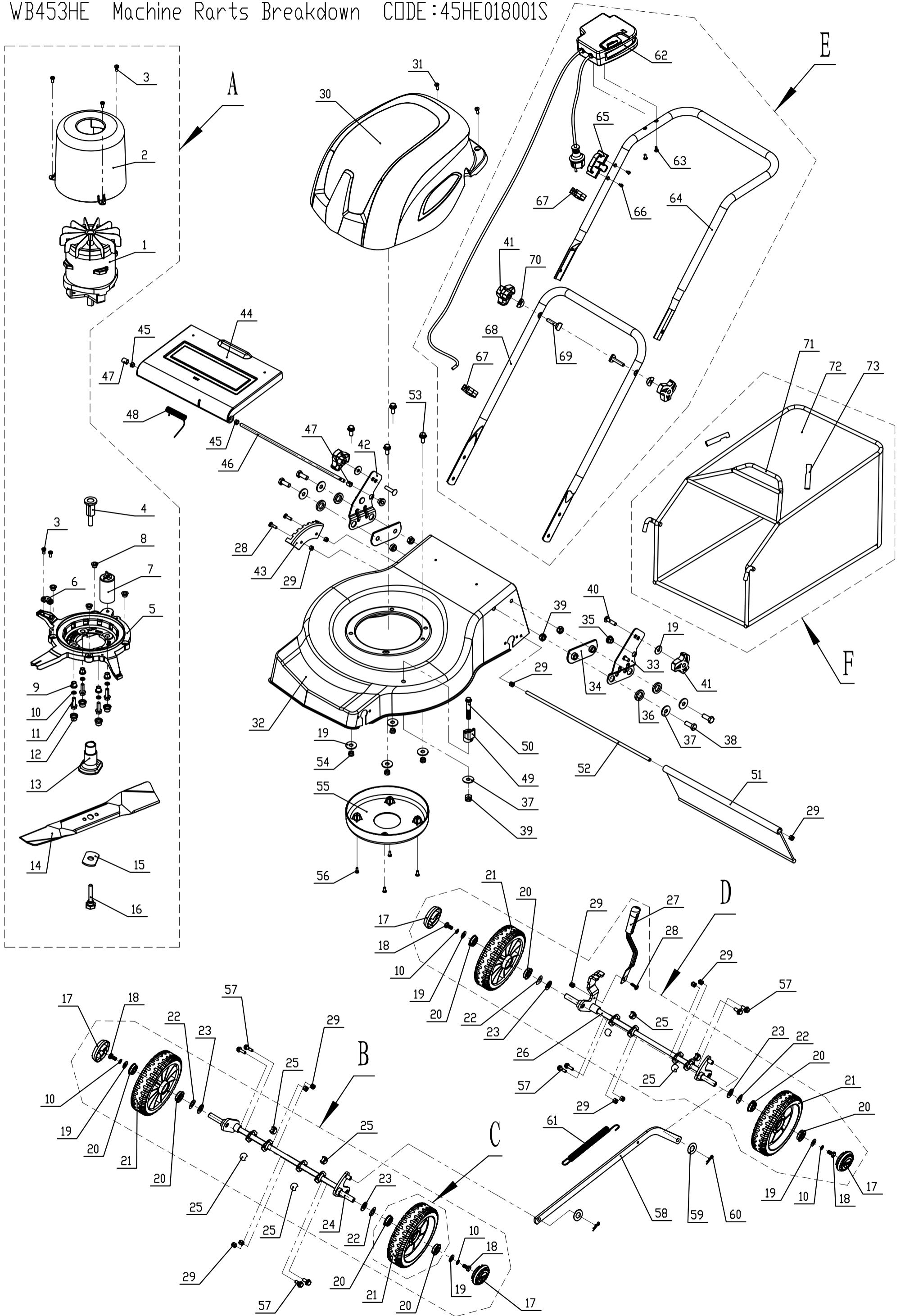


WB453HE Machine Parts Breakdown CODE:45HE018001S



**WB453HE Ersatzteilliste**

| <b>CODE</b> | <b>Teil Nummer</b> | <b>Bez.: Deutsch</b> | <b>Bez.: Englisch</b>     | <b>Anzahl</b> |
|-------------|--------------------|----------------------|---------------------------|---------------|
| A           | ii                 |                      | cutting system            | 1             |
| 1           | YY801800           | Elektro Motor        | electric motor            | 1             |
| 2           | 4540410010         | Motorabdeckung       | motor shield              | 1             |
| 3           | 0106005013         | Schraube             | cross slot ST screw       | 5             |
| 4           | 4540409010         | Schraubenhülle       | spindle sheath            | 1             |
| 5           | 4540408010         | Motorhalterung       | motor connector           | 1             |
| 6           | 4540414010         | Clip                 | wire clip                 | 1             |
| 7           | 081401075          | Kondensator          | capacitor                 | 1             |
| 8           | 4540413010         | Distanzstück         | spacer                    | 4             |
| 9           | 4540411010         | Distanzstück         | spacer                    | 4             |
| 10          | 0401008000         | Federscheibe         | spring washer             | 8             |
| 11          | 0102008025         | Bolzen               | hex flange bolt           | 4             |
| 12          | 4540412010         | Buchse               | spacer                    | 4             |
| 13          | 4540403010         | Messerhalter         | adapter                   | 1             |
| 14          | 4540404010         | Messer               | blade                     | 1             |
| 15          | 4540407010         | Federscheibe         | spring washer             | 1             |
| 16          | 4540405010         | Bolzen               | central bolt              | 1             |
| 17          | 5310214010         | Radkappe             | hub cap                   | 4             |
| 18          | 0101008015         | Bolzen               | hex bolt                  | 4             |
| 19          | 0301008000         | Scheibe              | flat washer               | 10            |
| 20          | 4510214010         | Lager                | bearing                   | 8             |
| 21          | 4510210010         | Rad                  | wheel                     | 4             |
| 22          | 5310211010         | Federscheibe         | spring washer             | 4             |
| 23          | 5310210010         | Buchse               | spacer                    | 4             |
| 24          | 4510201010         | Vorderachse          | front axle weldment       | 1             |
| 25          | 5310209010         | Lager                | spherical surface bearing | 8             |
| 26          | 4510301020         | Hinterachse          | rear axle weldment        | 1             |
| 27          | 4510303010         | Höheneinstellhebel   | adjustment lever          | 1             |
| 28          | 0104006014         | Schraube             | cross slot screw          | 3             |
| 29          | 0202006000         | Mutter               | hex lock nut              | 13            |
| 30          | 4540102010         | Motorgehäuse         | motor cover               | 1             |
| 31          | 0106005019         | Schraube             | cross slot screw          | 2             |
| 32          | 4530101010         | Gehäuse              | mower deck                | 1             |
| 33          | 4540103010         | linker Halter        | left bracket              | 1             |
| 34          | 4540105010         | Buchse               | spacer of left bracket    | 2             |
| 35          | 4540107010         | Buchse               | bush                      | 2             |
| 36          | 4540106010         | Distanzstück         | spacer                    | 4             |
| 37          | 0302010000         | Scheibe              | big washer                | 5             |
| 38          | 0101010025         | Bolzen               | hex bolt                  | 4             |
| 39          | 0202010000         | Mutter               | hex lock nut              | 5             |
| 40          | 4510513010         | Bolzen               | square neck bolt          | 2             |
| 41          | 4820541010         | Knopf                | knob                      | 4             |
| 42          | 4540104010         | rechter Halter       | right bracket             | 1             |
| 43          | 4510107010         | Höheneinstellraste   | graduator                 | 1             |
| 44          | 4510113020         | Abdeckung hinten     | rear cover                | 1             |
| 45          | 5320127021         | Buchse               | bush                      | 2             |
| 46          | 4510114020         | Stange               | pivot of rear cover       | 1             |
| 47          | 5320136010         | Distanz              | spacer                    | 2             |
| 48          | 4510115010         | Feder                | spring of rear cover      | 1             |
| 49          | 5310317010         | Schraubhalterung     | spring bracket            | 1             |
| 50          | 0102010045         | Bolzen               | hex flange bolt           | 1             |
| 51          | 4510111010         | Schutz               | deflector                 | 1             |

|    |            |                  |                     |   |
|----|------------|------------------|---------------------|---|
| 52 | 4510112010 | Stange           | tail pivot          | 1 |
| 53 | 0102008020 | Bolzen           | hex flange bolt     | 4 |
| 54 | 0202008000 | Mutter           | hex lock nut        | 4 |
| 55 | 4530109010 | untere Abdeckung | bottom cover        | 1 |
| 56 | 0106005019 | Schraube         | cross slot ST screw | 4 |
| 57 | 0102006012 | Bolzen           | hex flange bolt     | 8 |
| 58 | 4510310020 | Haltearm         | linkage             | 1 |
| 59 | 0301010000 | Scheibe          | flat washer         | 2 |
| 60 | 5320333010 | Sicherungsring   | check ring          | 2 |
| 61 | 4510311010 | Feder            | spring              | 1 |
| 62 | 4540503010 | Schalter         | switch              | 1 |
| 63 | 0108005022 | Schraube         | cross slot ST screw | 2 |
| 64 | 4530501010 | Holm oben        | upper handle        | 1 |
| 65 | 4540505010 | Kabelschiene     | cable bracket       | 1 |
| 66 | 0106004013 | Schraube         | cross slot ST screw | 2 |
| 67 | 4540507010 | Kabelclip        | cable clip          | 2 |
| 68 | 4510502020 | Hom unten        | lower handle        | 1 |
| 69 | 5310510010 | Bolzen           | bolt                | 2 |
| 70 | 4510510010 | Scheibe          | arc washer          | 2 |
| 71 | 4510602030 | Rahmen           | frame               | 1 |
| 72 | 4510603030 | Fangsack         | grass bag           | 1 |
| 73 | 4510602050 | Gummischutz      | sheath              | 2 |