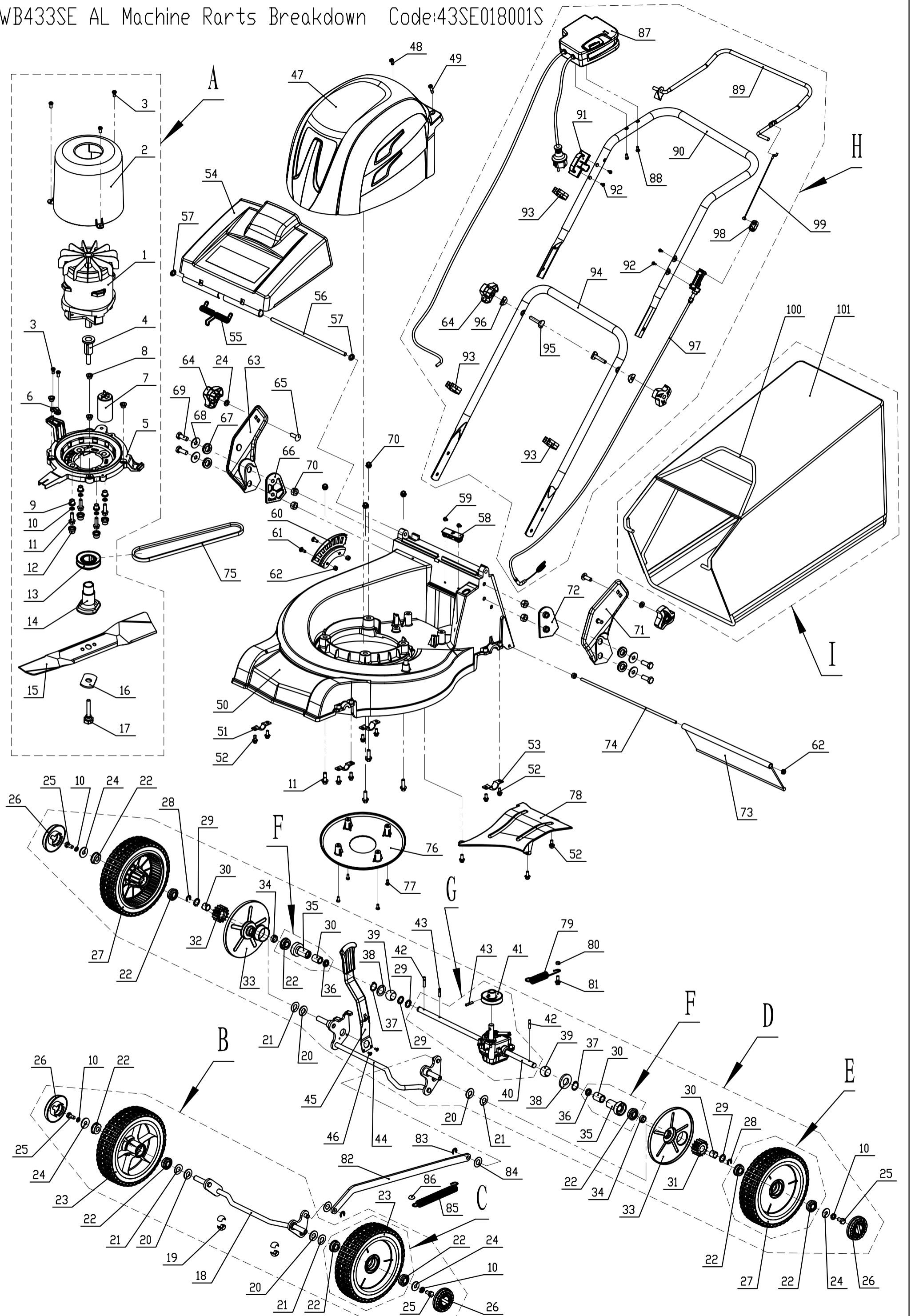


WB433SE AL Machine Rarts Breakdown Code:43SE018001S



WB433SE AL (Ersatzteilliste)

| # | Teil Nummer | Bez.: Deutsch | Bez.: Englisch | Anzahl |
|----|-------------|-----------------|---------------------------|--------|
| A | | | cutting system | 1 |
| 1 | YY801800 | Elektromotor | electric motor | 1 |
| 2 | 4540410010 | Motorschutz | motor shield | 1 |
| 3 | 0106005013 | Schraube | cross slot ST screw | 5 |
| 4 | 4540409010 | Spindelhülle | spindle sheath | 1 |
| 5 | 4340408010 | Motoranschluss | motor connector | 1 |
| 6 | 4540414010 | Klammer | wire clip | 1 |
| 7 | 081401075 | Kondensator | capacitor | 1 |
| 8 | 4540413010 | Scheibe | spacer | 4 |
| 9 | 4540411010 | Scheibe | spacer | 4 |
| 10 | 0401008000 | Federring | spring washer | 8 |
| 11 | 0102008025 | Schraube | hex flange bolt | 8 |
| 12 | 4540412010 | Scheibe | spacer | 4 |
| 13 | 4540402010 | Riemenscheibe | pulley | 1 |
| 14 | 4540403010 | Adapter | adapter | 1 |
| 15 | 4340404010 | Messer | blade | 1 |
| 16 | 4540407010 | Federscheibe | spring washer | 1 |
| 17 | 4540405010 | Schraube | central bolt | 1 |
| 18 | 4320201010 | Vorderachse | front axle weldment | 1 |
| 19 | 5310209010 | Lagerung | spherical surface bearing | 4 |
| 20 | 5310210010 | Scheibe | spacer | 4 |
| 21 | 5310211010 | Federscheibe | spring washer | 4 |
| 22 | 5310213010 | Lager | bearing | 10 |
| 23 | 4820209010 | Rad | wheel | 2 |
| 24 | 0301008000 | Scheibe | flat washer | 6 |
| 25 | 0101008015 | Schraube | hex bolt | 4 |
| 26 | 4520205010 | Radschild | hub cap | 4 |
| 27 | 4820305010 | Hinterrad | rear wheel | 2 |
| 28 | 1301009000 | Sicherungsring | check ring | 2 |
| 29 | 5020311010 | Unterlegscheibe | mat | 4 |
| 30 | 5320326010 | Lager | bearing | 4 |
| 31 | 5320320010 | Zahnrad links | left pinion | 1 |
| 32 | 5320321010 | Zahnrad rechts | right pinion | 1 |
| 33 | 4520308010 | Radschild | rear wheel cover | 2 |
| 34 | 4820318010 | Scheibe | spacer | 2 |
| F | 5320324000 | | bearing sheath assembly | 2 |
| 35 | 5320324020 | Lagerbuchse | bearing sheath | 2 |
| 36 | 5320327010 | Staubschutz | dustproof ring | 2 |
| 37 | 1001020000 | Sicherungsring | check ring | 2 |
| 38 | 4820326010 | Scheibe | spacer | 2 |
| 39 | 5320328010 | Nylonlager | spherical surface bearing | 2 |
| 40 | 4320305020 | Getriebe | gearbox | 1 |
| 41 | 5020308020 | Riemenscheibe | pulley | 1 |
| 42 | 5320322010 | Stift | pin | 2 |

| | | | | |
|----|-------------|----------------------|--------------------------|----|
| 43 | 0701005020 | Federstift | spring pin | 2 |
| 44 | 4320301010 | Hinterachse | rear axle weldment | 1 |
| 45 | 5330302010 | Höheneinstellhebel | adjustment lever | 1 |
| 46 | 0104005008 | Schraube | cross slot screw | 2 |
| 47 | 4340102010 | Motorabdeckung | motor cover | 1 |
| 48 | 4820122010 | Schraube | inner hex ST lock screw | 1 |
| 49 | 4820106011 | Schraube | inner hex ST lock screw | 1 |
| 50 | 4340101010 | Gehäuse | mower deck | 1 |
| 51 | 4820208010 | Vordere Lagerklammer | front bearing bracket | 2 |
| 52 | 4820104010 | Schraube | hex flange ST lock screw | 11 |
| 53 | 5320114020 | Klammer | upper bearing bracket | 2 |
| 54 | 4320115010 | hinterer Abdeckung | rear cover | 1 |
| 55 | 4820128010 | Feder | spring of rear cover | 1 |
| 56 | 4320116010 | Abdeckungshalter | pivot of rear cover | 1 |
| 57 | 4510114030 | Buchse | shaft lock cap | 2 |
| 58 | 4340108010 | Halter | bracket | 1 |
| 59 | 0101005020A | Schraube | hex ST lock screw | 2 |
| 60 | 4320105010 | Adapter | graduator | 1 |
| 61 | 0104006014 | Schraube | cross slot screw | 2 |
| 62 | 0202006000 | Mutter | hex lock nut | 4 |
| 63 | 4340104010 | Halterung rechts | right bracket | 1 |
| 64 | 4820541010 | Knopf | knob | 4 |
| 65 | 4510513010 | Schraube | square neck bolt | 2 |
| 66 | 4340106010 | Scheibe | spacer of right bracket | 1 |
| 67 | 4340107010 | Scheibe | spacer | 4 |
| 68 | 0303008000 | Scheibe | big washer | 4 |
| 69 | 0101008030 | Schraube | hex bolt | 4 |
| 70 | 0202008000 | Mutter | hex lock nut | 8 |
| 71 | 4340103010 | Halterung links | left bracket | 1 |
| 72 | 4340105010 | Scheibe | spacer of left bracket | 1 |
| 73 | 4320119010 | Deflektor | deflector | 1 |
| 74 | 4320118010 | Stange | tail pivot | 1 |
| 75 | 4320104010 | Keilriemen | belt | 1 |
| 76 | 4340109010 | Schutz | bottom cover | 1 |
| 77 | 0106005019 | Schraube | cross slot ST screw | 4 |
| 78 | 4320102010 | Ablenkstück | chute shield | 1 |
| 79 | 4820317010 | Feder | spring | 1 |
| 80 | 4820317011 | Scheibe | spacer | 1 |
| 81 | 4820104011 | Schraube | hex flange ST lock screw | 1 |
| 82 | 4320308010 | Hebel | linkage | 1 |
| 83 | 1301008000 | Sicherungsring | check ring | 2 |
| 84 | 4820306013 | Nylonscheibe | nylon bush | 2 |
| 85 | 4320309010 | Feder | spring | 1 |
| 86 | 4810309010 | Sicherungsdeckel | check cap | 1 |
| 87 | 4340503010 | Schalter | switch | 1 |
| 88 | 0108005022 | Schraube | cross slot ST screw | 2 |
| 89 | 4340504010 | Hebel (Antrieb) | drive control lever | 1 |

| | | | | |
|-----|------------|----------------|---------------------|---|
| 90 | 4340501010 | Holm oben | upper handle | 1 |
| 91 | 4540505010 | Kabelschiene | cable bracket | 1 |
| 92 | 0106004013 | Schraube | cross slot ST screw | 4 |
| 93 | 4540507010 | Kabelclip | cable clip | 3 |
| 94 | 4320502010 | Hom unten | lower handle | 1 |
| 95 | 5310510010 | Bolzen | bolt | 2 |
| 96 | 4510510010 | Scheibe | arc washer | 2 |
| 97 | 4340506010 | Kupplungskabel | clutch calbe | 1 |
| 98 | 4540506030 | Stecker | connector | 1 |
| 99 | 4340506050 | Kabel | upper cable | 1 |
| 100 | 4320602010 | Rahmen | frame | 1 |
| 101 | 4320603010 | Fangsack | grass bag | 1 |